

i tape with **ipg**



UA 262024-SB

Uniform Automatic Case Sealer

Interpack's UA Series Case Sealers are adjustable, operator free machines that process same sized RSC style cases. These machines are required when production flow rates exceed manual processing or when automatic case packing is utilized. The UA 262024-SB offers upgraded side belt drive and processes the widest range of cases.

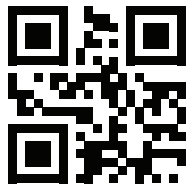
Every Interpack™ Case Sealer comes with a HSD 2000-ET II tape head with adaptive technology to provide optimal tape application and wipe down to each of the three taped panels of the case.

When you compare features, benefits and value, Interpack™ Case Sealers are the right choice for operators, plant engineers, maintenance and purchasing.

FEATURES & BENEFITS

- Compact 65" frame conserves floor space
- Full operating range versus competitive products
- Side belts capture the case between 2 moving belts to positively process the widest range of sizes
- Twin 1/8 HP drive motors for 24/7 operation
- Simple case size set up
 - Operator adjusts for case width & height
 - Machine self-adjusts to new case length
- Standard interlocking safety shields
- Standard indexing gate
- Slide & lock upper head simplifies case size set up
- Floating upper head processes compressible overfills
- Offset tape heads process cases as low as 3 1/2" tall
- Multi-wheel top squeezer standard

Scan for more information on Interpack's UA Series, including CAD drawings, manuals and videos!



All UA Series machines are engineered to provide:

- Industry leading features
- Heavy duty construction for 24/7 operation
- Ergonomic, user-friendly operation and case size set up

UA 262024-SB

Model	Min Case (L x W x H)	Max Case (L x W x H)	Case Weight	Belt Speed	Electric	Compressed Air Requirements	Tape Width	Conveyor Height	Machine Weight	Machine Dimensions (L x W x H)
UA 262024-SB	6" x 3½" x 3½"	26" x 20" x 24"	0 – 85 lbs	82 ft/min	110v., 1ph., 60hz., 6A., (2 x ½ HP)	60 PSI	36 – 48 mm (1.5" – 2")	24" – 30"	905 lbs crated	65¼" x 49½" x 72¼"
UA 262024-SB/3	6" x 4½" x 3½"	26" x 20" x 24"	0 – 85 lbs	82 ft/min	110v., 1ph., 60hz., 6A., (2 x ½ HP)	60 PSI	48 – 72 mm (2" – 3")	24" – 30"	905 lbs crated	65¼" x 49½" x 72¼"

Top Squeezers close to 9½"

Tip up top tape head eases roll replacement

Single handle locks upper head to both columns

Standard interlocking safety shields (operator side)

3 wheel top squeezer

Standard indexing gate

Offset tape heads process cases as low as 3½"

In-feed sensor

Twin ½ HP gear motors to process up to 85 lbs cases

Self-tensioning & self-tracking drive belts simplifies belt replacement

No case length adjustment necessary

Side belt drive secures the case during processing

OPTIONS & ACCESSORIES



3" wide tape heads



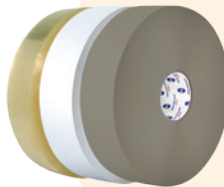
Tape head spare parts kit



Swivel & locking casters



Secondary E-Stop



IPG® is the only North American manufacturer of all 3 types of pressure sensitive adhesives. Combine Interpack™ machinery and IPG® long roll pressure sensitive tape for greater value. Contact your authorized IPG® distributor for details.

